

YEAR END
UPDATE
2024 2025

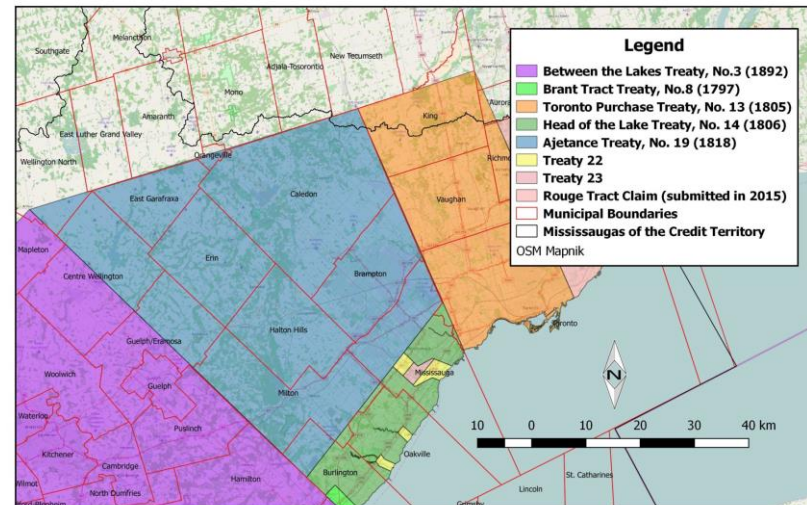
Dufferin Food
Share
&
Orangeville
Food Bank



RECONCILIATION

In the spirit of reconciliation, we have taken up learning a new Anishinaabe word as we stand on Treaty 18 & Treaty 19 lands

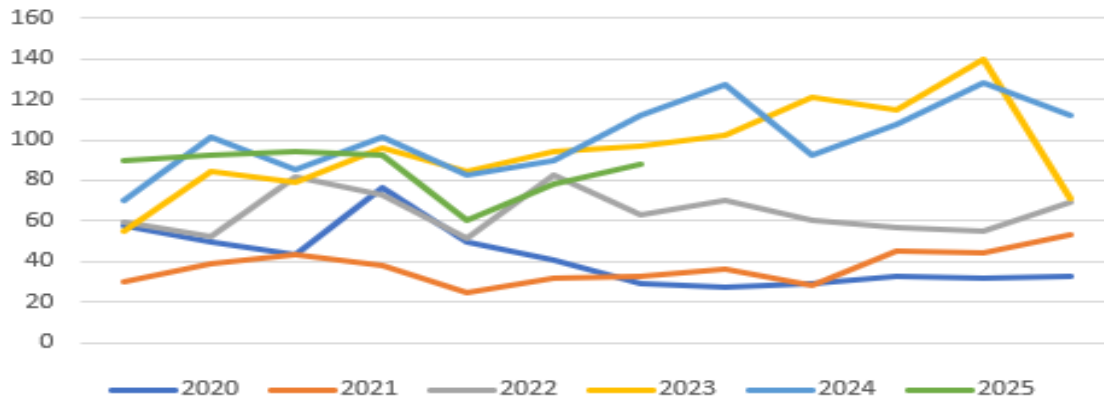
Aaniin Boozhoo – “Thank you” for having us tonight
Mino giizhiqad – “It’s a nice day” to be here



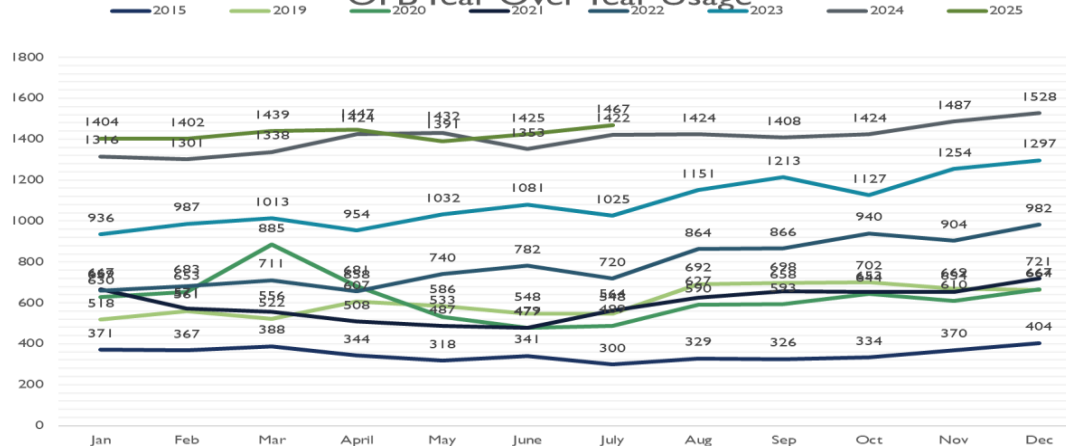
Municipal Boundaries Related to the Ajetance Treaty, No. 19 (1818)

OFB YEAR OVER YEAR USAGE

Dufferin Food Share Grand Valley



OFB Year Over Year Usage



DFSGV STATS

17% own their own home
 35% are children
 30% are seniors

Distributing 35 lbs. per person per month

Year over Year Increases

- 2020/2021 = - 4%
- 2021/2022 = +28%
- 2022/2023 = +37%
- 2023/2024 = +38%
- 2024/2025 = +13%

OFB & DFSGV

We have increased our food distribution by 15% over last year; with 51% of our food being perishable.

Food donations are down 22%; forcing our non-perishable food spending up 77% and perishable spending up 23%

2024/2025 STAT'S

These stats represent a total of 25,931 visits to Orangeville and Grand Valley Food Banks last year

- 605,000 lbs. of food distributed to clients --- increase of 15% over last year
- 225,000 lbs. of that was purchased – an increase of 50,000 lbs.
- **77% increase in nonperishable purchases – to cover the -22% decrease in donations**
- 51% of what we distribute is perishable including milk, eggs, produce and proteins
- 60% increase in number of employed people accessing the food bank over 2024-MHC (March Hunger Count) ***1900% + increase since 2015**
- 124%+ in the number of seniors accessing the food bank over 2024 MHC

HUNGER IN OUR COMMUNITY



Food Bank Use

Food banks serve people in need in **Dufferin–Caledon**. In 2024...



3,709

People used a food bank a total of **34,523** times

In Ontario, 1,038,503 people used a food bank 8,682,554 times in 2024. In many communities, food bank use is higher than what is represented.



35%

Of those visitors were children.

In Ontario, 29% of food bank visitors are children, even though they only represent 19% of the general population.

These numbers only represent data collected by food banks within the Feed Ontario network in 2024, but in many communities, food bank use is higher than represented.

Orangeville and Grand Valley made up 25,931 of those visits – 41% increase over last year

- 48% of food bank clients in our riding rely on social assistance
- In Dufferin, there are 719 people receiving Ontario Works and 1,372 people on Ontario Disability Support Program.
- 19% Food Insecurity
- In Ontario, 24% of households are food insecure



dufferin
FOOD
SHARE
well nourished community

DUFFERIN FOOD SHARE GRAND VALLEY

We are pleased to announce our new location as of August 26th, 2025
27 Main St N – “the old schoolhouse”

This new location will have offices available to other not for profits to increase access to services for residents where they live

30,000 lbs. of food has been distributed through the shopping model, and we are striving to meet our goal of 50% perishables in the coming year.

Community Food Support



Vending Machine – Orangeville Public Library

- Is filled Monday – Friday
- In 2024/2025 it supplied 10,000+ meals
- Introducing a second machine in 2026

Community Food Share 2023/2024

- Supports 15+ community organizations with 84,000 lbs. of food

Neighbours Community Market – Sliding scale produce market

- Three markets weekly – Grand Valley, Shelburne and Orangeville
- Supporting 1945 people through the county

Seniors Markets

- Monthly markets at County Senior's buildings with produce, milk, eggs and prepared meals

Serving 770 last year

ADVOCACY – How do we change the narrative

To address hunger and poverty in Ontario, the Feed Ontario network of food banks urges the provincial



Government to:

Invest in a strong social safety net

Align social assistance rates with the cost of living, modernize rules to ensure resilience and dignity, improve access to supports, extend social assistance benefit coverage



Invest in affordable housing

Strengthen laws to protect tenants and create more affordable housing, invest in social and supportive housing, expand the housing benefit



Invest in a strong workforce

Develop and protect labour laws that benefit workers, allow low-income workers to keep more of their income, enhance worker support programs like WSIB

Nobody made a greater mistake than he who did nothing because he could do only a little.

Edmund Burke, statesman and writer (12 Jan 1729-



SUPPORT FOR DFSGV

We are excited to launch this new space building on the work of the many dedicated community volunteers. In the coming months we will work toward our goal of building out a community hub and bringing more services into Grand Valley.

In support of our investment and long standing service to the community we ask that council consider a financial contribution to offset our property taxes for 27 Main St N of \$8,000.00



THANK YOU

YOU MAKE OUR WORK
POSSIBLE !